

« 2»  
( , )

03011732  
« »  
( , )

. . . , ( « » )

« » . . . ( , )

45-50 , 3-4 - 75-89 5 -  
90 . 50  
( 600 .). 150-200 . — 8-  
70

[1,4]

70 . ( ) -  
50- , . —  
, 50 , —

50

[5].

(30-40%).

, L-

E.

200

: 60

, 60-74

, 75

(

).

(M),

(m),

t-

),

( ).

-

3,

7,

-

3,

7.

1.

(M±m)

-	51	88	55	-
,	51.6±0.89	66.7±0.38	80.3±0.62	-
/ 2	30.6±0.85	29.8±0.51	28.1±0.84*	-0.11
, /	75±1.75	73±1.33	67.3±0.90*	-0.31*
, /	6.3±0.27	6.9±0.27	7.5±0.41*	0.20*
/	5.3±0.59	5.1±0.25	5.5±0.29	0.09
/	14.4±1.47	13.4±0.88	17.2±2.36	0.06
-	28.4±1.93	25.8±1.36	16.9±1.12*	-0.35*
, /	26.6±1.95	27.1±1.80	23.8±1.41	-0.21*

«\*»

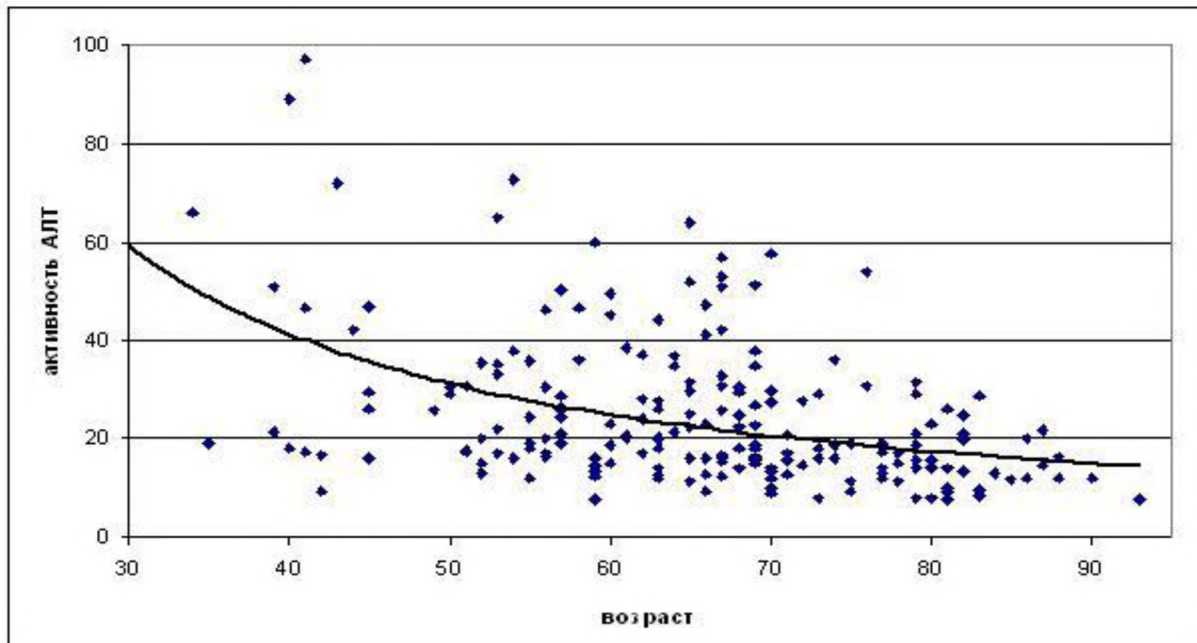
,  
(p<0,05)  
(p<0,01).

.1

.1

0,35; p<0,01).

( =-



.1.

⋮

1.

2.

2.

1.

2.

3.

“

”, 2002. 633 .

) / . . . , . . . //

. 2007. . 5-8.

//

. . . . . 9. 1. 2017. . 110-116.

4. Luft ,R., A case of severe hypermetabolism of nonthyroid origin with a defect in the maintenance of mitochondrial respiratory control: a correlated clinical? Biochemical and morphological study // R.A.Luft, J.Clin, D.Ikkos,G. Palmieri,L. Ernester,B. Afzelius/ Invest. 1962. Vol.41. P.1776-1804.

5. W.Ray Kim . Serum activity of alanine aminotransferase (ALT) as an inductor of health and disease. / W.Ray Kim, Steven L.Flamm, Adrian M. Di Bisceglie. // Hepatology. 2008.Vol. 47, Issue 4. P.1103-1110.