

« », (,)

•

- « », (,)

•

- « », (,)

•

« », (,)

•

« », (,)

•

« » (,).

-

bcl 2 53
BRCA1 538 INSC

•

-

.10% , -
 BRCA1 BRCA2.

1000 BRCA1. 90% -
 5382ins . 2-5% [1].

BRCA1- , [3,6]. , -

BRCA1 BRCA1 BRCA2, [11]. -
 BRCA1 BRCA2

•

•

•

•

[3]. BRCA1,2 -
 bcl2[9].

Yang, et al. [12]

BRCA1 12. , bcl2 102 BRCA1- -

53. 53 13-53,5%

[12].

[4,8,10].

BRCA1 BRCA2 -

377 , -

217 BRCA1, BRCA2, -

; 66 160

Real-

time aqMan bcl2 53 -

Tissue Micr arrays. -

66 47 -

(,)

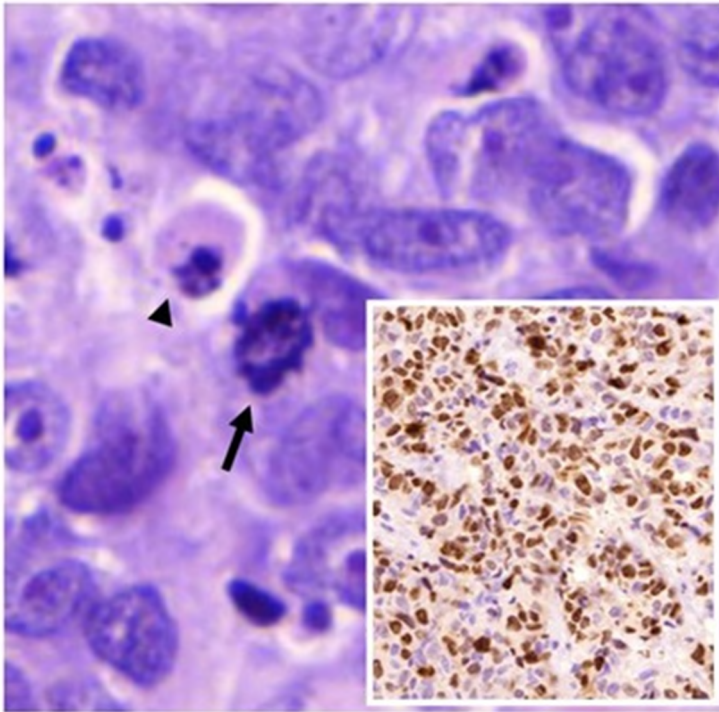
7 (3.2%) 5382insC 217 BRCA1. -

BRCA2. 185delAG 160 BRCA1 6174del -

BRCA1 5382insC (41.2) (p<0.05) , -

BRCA1-

(.3),



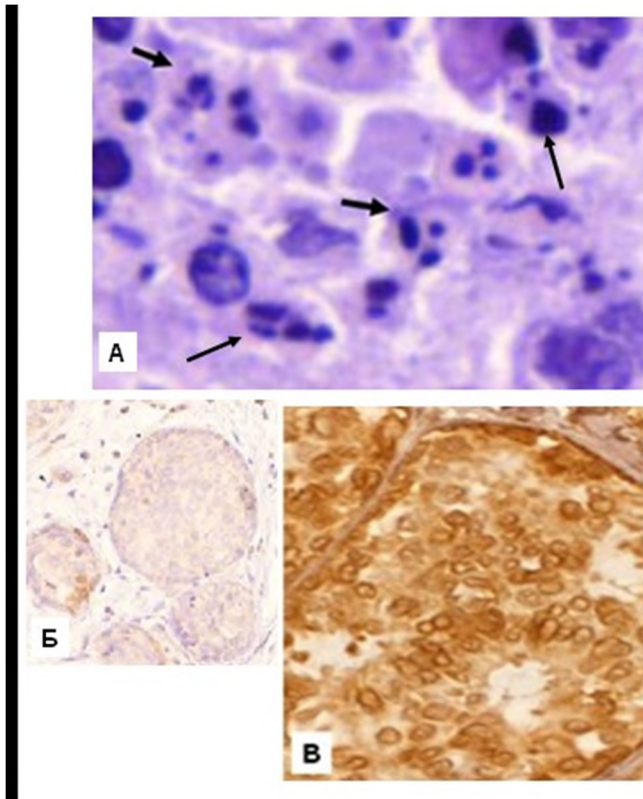
1.

50%),
)..
Ki67 (

(),
)..
).. 200.

(

:
- Ki67
(



2. BRCA1-

(,)

()

:

-

bcl2

BRCA1; -

-

-

bcl2

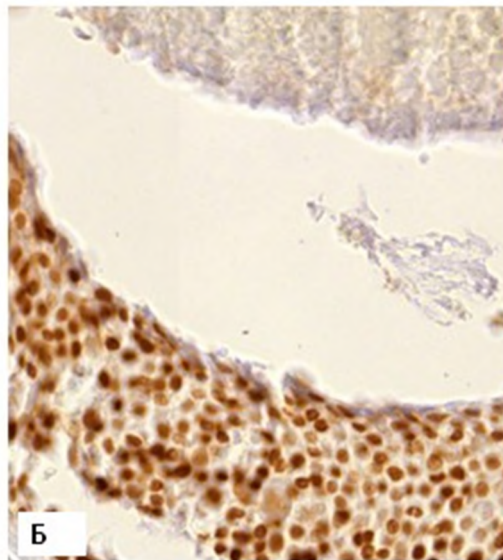
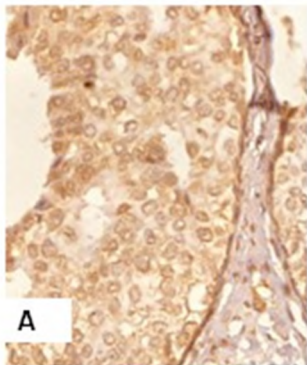
BRCA1. .

(),

-

(,).

. 100(,) 400().



3. /

53

()

BRCA1().

.

. 200.

,

BRCA1-
bcl2
BRCA1
53.

[2]
BRCA1- 5382insC.
[2,7]
:
- - , ,
- - ,
- .
- ,
BRCA1 bcl2, 538insC
53. . ,
, -
-
BRCA1 bcl2
-
bcl2. BRCA1- , ,
-
bcl2 - ,
- bcl2 BRCA1.
- 53 ,
BRCA1- [5] -
, , 53 -
- bcl2. ,
[10],
. , , -
- bcl2
BRCA1. -
, bcl2, ,
53. -
, , , -
, , , -
. :
1. - . . , . . , . . 2014. -

BRCA1 9 415 delA, 185delAG, 538 insC.
. 2: 8-11.

2. . . 2010. , 11 (4): 259-266.
3. // ,2010.- .56.->2.- . 117-127.
4. /
5. « » ,2004.- . 350-359. / ,1997.- 224 .
6. Cattoretti G., Rilke F., Anderola S., Damato O L., Della D. p53 Expression in breast cancer. *Int. J. Cancer*, 1988.-41.- p.178- 183.
7. Da Silva L., Lakhani S.R. 2010. Pathology of hereditary breast cancer. *Mod. Pathol.* 9 (23): 46-51.
8. D. Dabbs. *Diagnostic immunohistochemistry*. Saunders Elsevier,2010.-P. 807
9. Freneaux P., Stoppa-lyonnet D., Kambouhner M., Nicolas A., Zafrani B., Vincent-Salomon A. 2000. Low expression of bcl2 in Brca1-associated breast cancers. *Journal of cancer* 83910, 2316-1322.
10. Horne G., Anderson J.J., Tiniakos D.G., McIntosh F.G., Thomas M.D., Angus B., Henry J.A., Lennard TWJ. A p53 protein as a prognostic indicator in breast carcinoma: a comparison of four antibodies for immunohistochemistry // *British Journal of Cancer* (1996) 73, 29-35.
11. WHO classification of tumours of the breast / edited by S.R.Lakhani, I.O.Ellis, S.R. Schnitt P.H.Tan, van de Vijver. Lyon,2012.-239 p.
12. Yang Q1, Yoshimura G, Nakamura M, Nakamura Y, Suzuma T, Umemura T, Mori I, Sakurai T, Kakudo K. Correlation between BRCA1 expression and apoptosis-related biological parameters in sporadic breast carcinomas//*Anticancer Res.* 2002 Nov-Dec;22(6B):3615-9.